

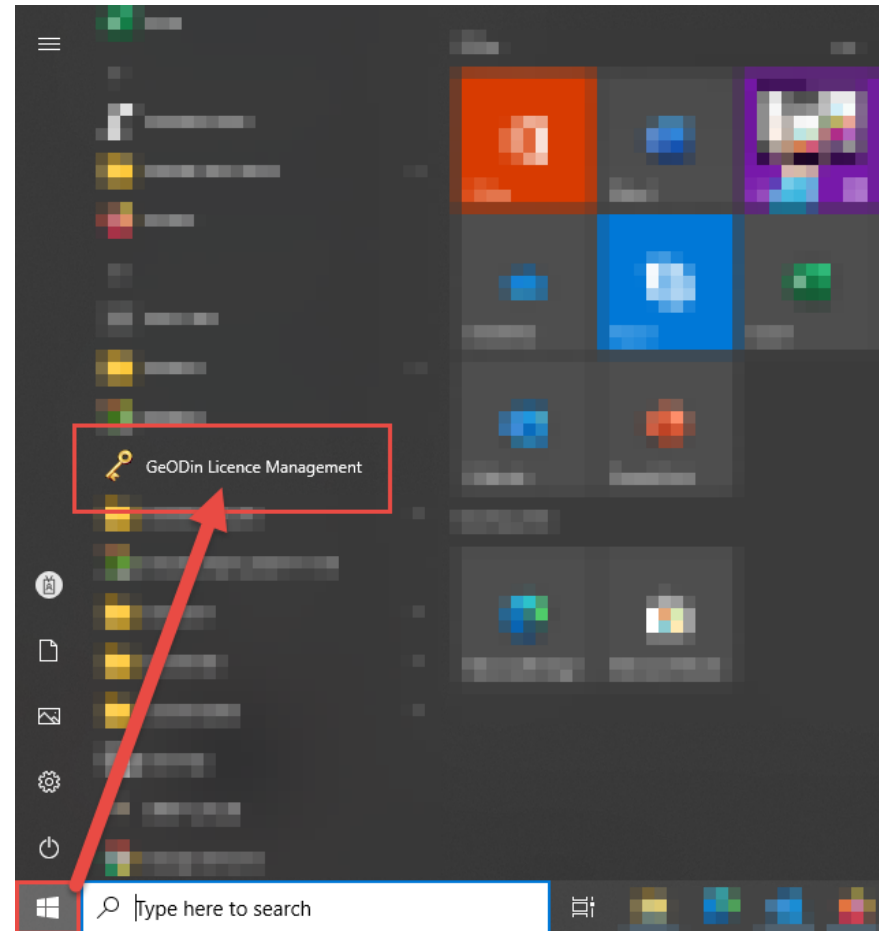
A wide-angle landscape photograph of a mountain range. In the foreground, a large, rounded rock formation with a flat top sits on a slope of green and brown vegetation. A blue lake winds through the middle ground, surrounded by more rounded hills. In the background, a range of jagged, layered rock peaks stretches across the horizon under a sky filled with soft, grey clouds. The lighting suggests late afternoon or early morning.

FUGRO

**GeODin 9.5
Licence update**

Step 1: Starting the licence manager

To update your GeODin licence, start the licence manager via the Windows Start menu and select the menu item **GeODin Licence Management**.

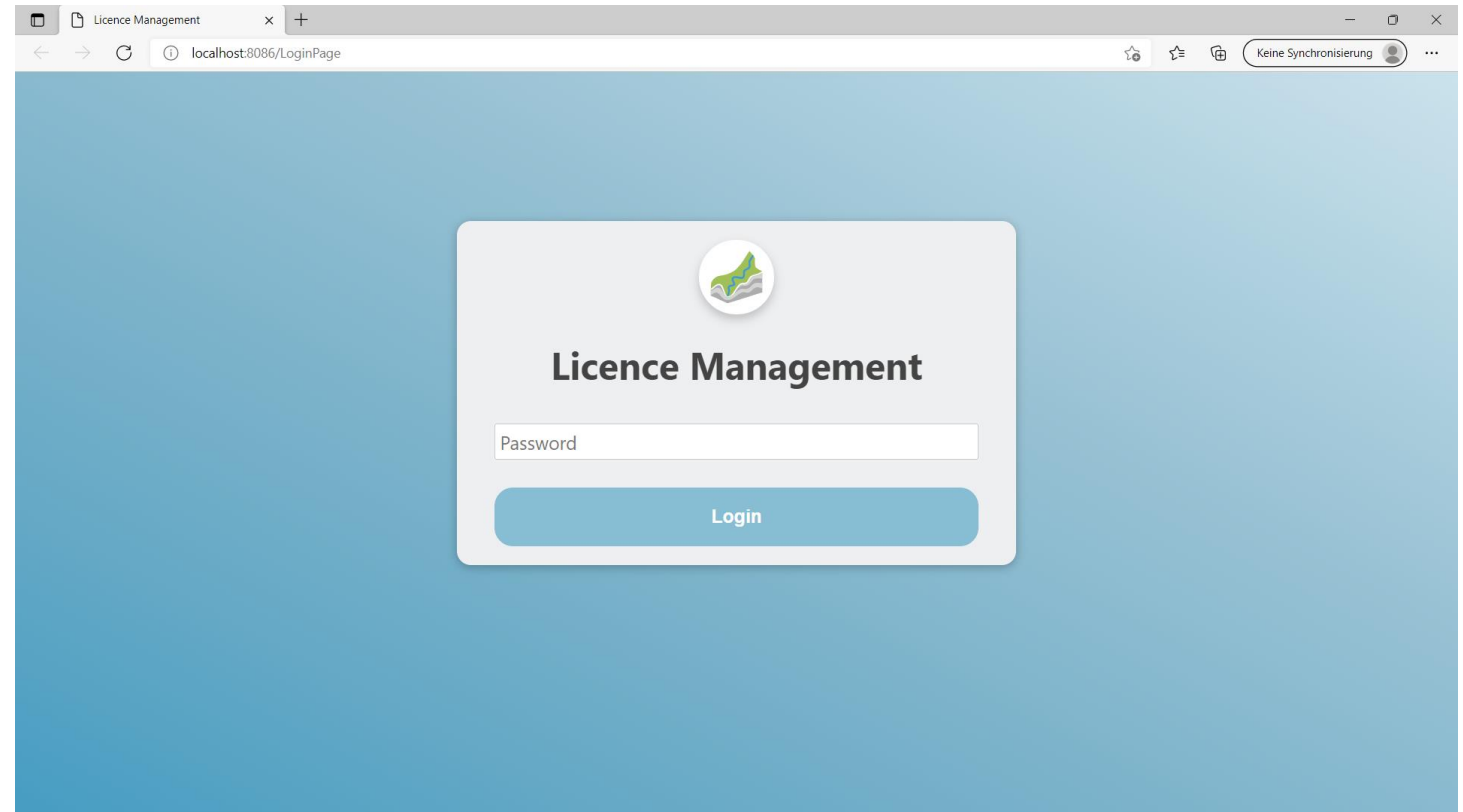


Step 2: Password entry

Now enter the admin password defined during the installation of the GeODin licence service to log in to the licence manager.

Note:

Port settings and admin password are stored in the GeODinLicenceServer.ini file during the installation of the GeODin licence service.



Step 3: Update licence (until server version 1.8)

Below the menu item **Licence server**, select the option **Update licence**.

After a successful licence update, the updated information (e.g. additional licence packages, new expiry date) for your licence will now be displayed, if applicable.

Before update

Licence Management

LICENCE SERVER LANGUAGES USER STATUS LICENCE INFORMATION

Serial number: {871CF...}

Start

Stop

Update licence

Download server update

Essentials Available: 0 Maximum: 1 Valid to date: 29/06/2022

After update

Licence Management

LICENCE SERVER LANGUAGES USER STATUS LICENCE INFORMATION

Serial number: {871CF...}

Essentials Available: 1 Maximum: 1 Valid to date: 29/07/2022

Step 3: Update licence (since server version 1.9)

Click on the **<Update Licence>** button below the menu item **Licence server**.

After a successful licence update, you will be redirected to the page with the licence information (if applicable, additional licence packages or a new expiry date are now shown here).

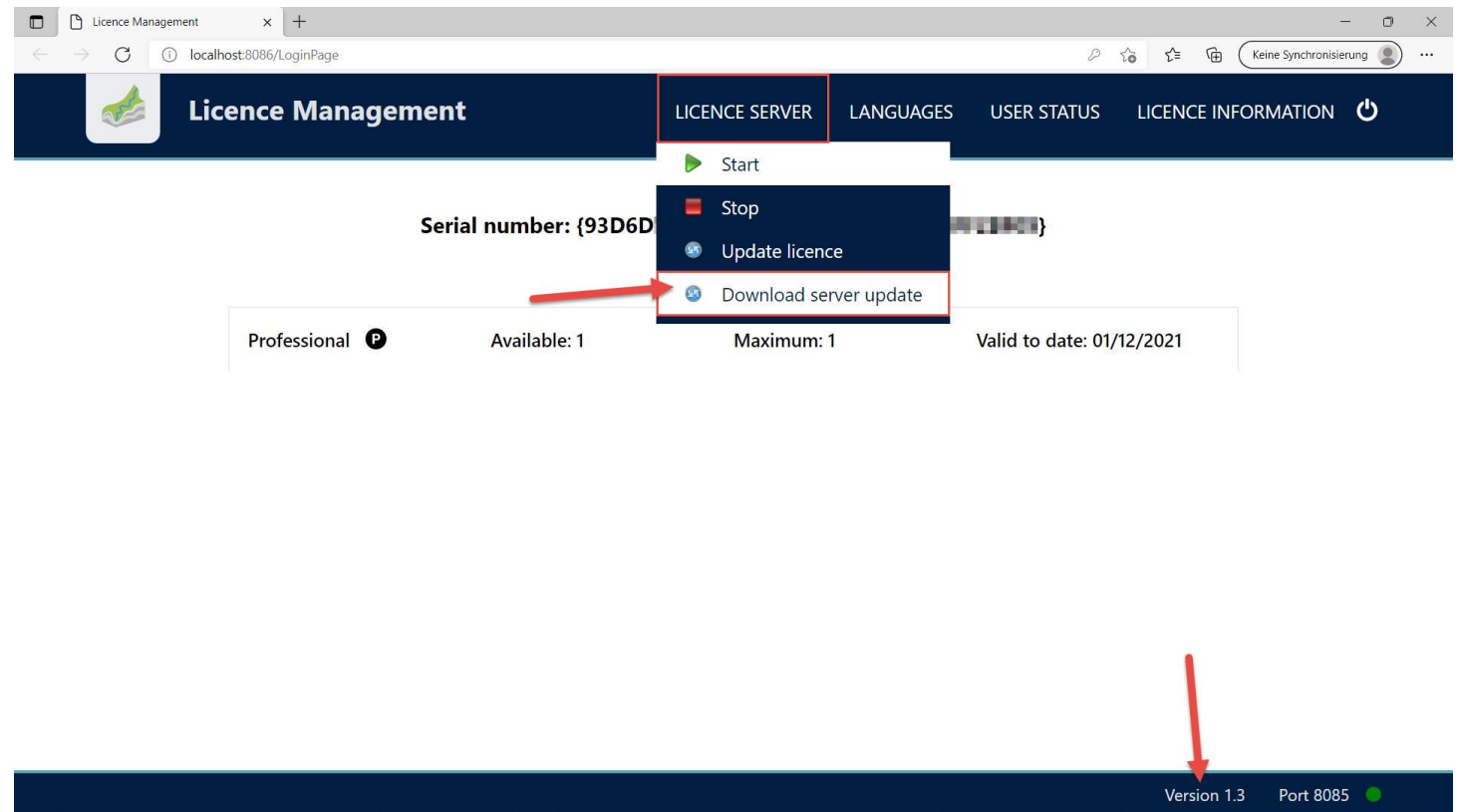
The screenshot displays the GeODin web interface. At the top, a dark blue navigation bar contains the 'Licence Management' menu item, which is highlighted with a red border. Below this, the 'Licence server' section is visible, featuring a 'Start' button (green play icon), a 'Stop' button (red stop icon), and a 'Update licence' button (blue button with a refresh icon), which is highlighted with a red box. Below the 'Update licence' button is a 'Download server update' button (dark blue button with a refresh icon). The 'Information' section shows the following details: Port: 8085, Version: 1.9, and Auto logout: 00h 45min. At the bottom right of the page, the footer indicates 'Version 1.9 Port 8085' with a green status indicator.

Step 4: Update licence server (until server version 1.8)

As the GeODin licence service is continuously being developed, you can check whether an update of the GeODin licence service is available when you update your licence. To do so, select the option **Download server update** below the menu item **Licence server**.

Note:

The current version of your GeODin licence service is displayed at the bottom right of the licence manager interface.

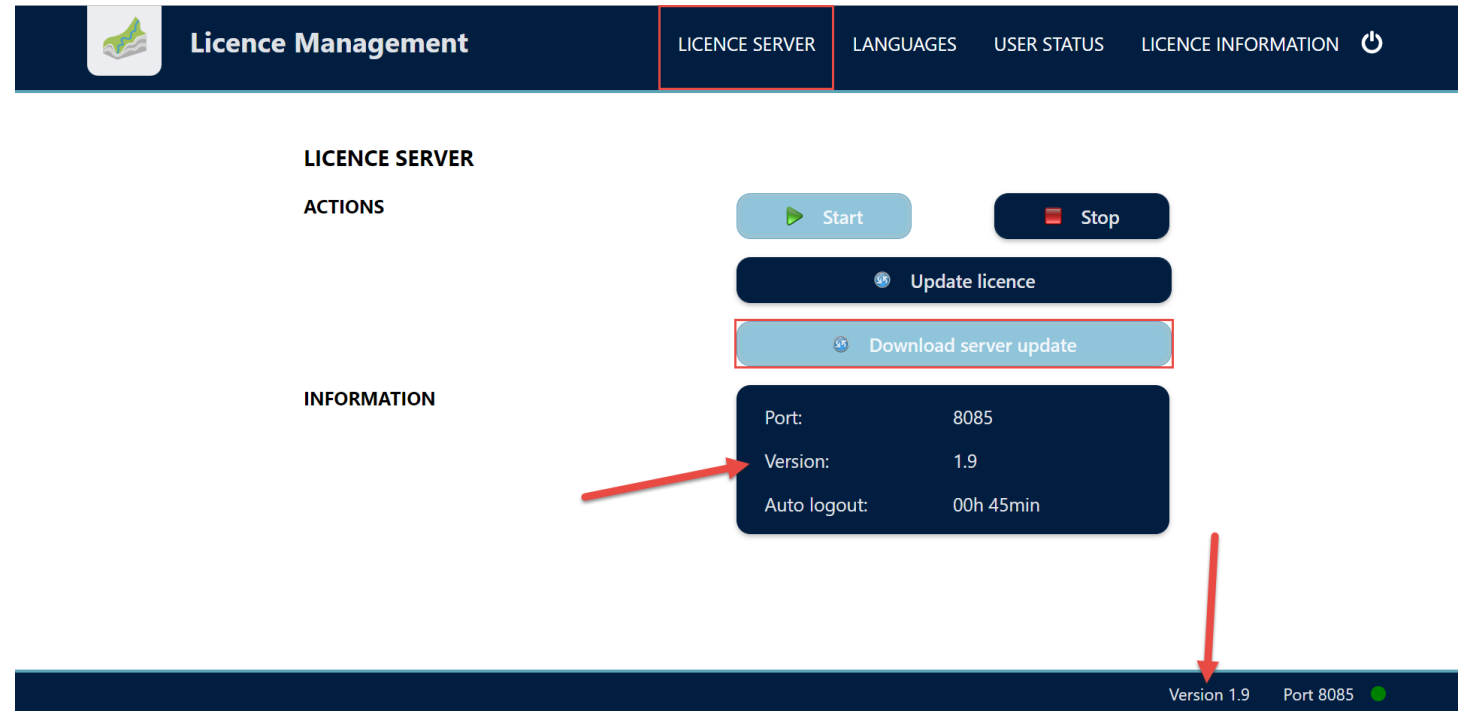


Step 4: Update licence server (since server version 1.9)

As the GeODin licence service is continuously being developed, you can check whether an update of the GeODin licence service is available when you update your licence. To do so, click on the button <Download server update> below the menu item **Licence server**.

Note:

The current version of your GeODin licence service is displayed at the bottom right of the licence manager interface as well as in the information box below the menu item "Licence server".



The screenshot displays the 'Licence Management' interface. The top navigation bar includes 'Licence Management', 'LICENCE SERVER', 'LANGUAGES', 'USER STATUS', and 'LICENCE INFORMATION'. The 'LICENCE SERVER' section is active and contains the following elements:

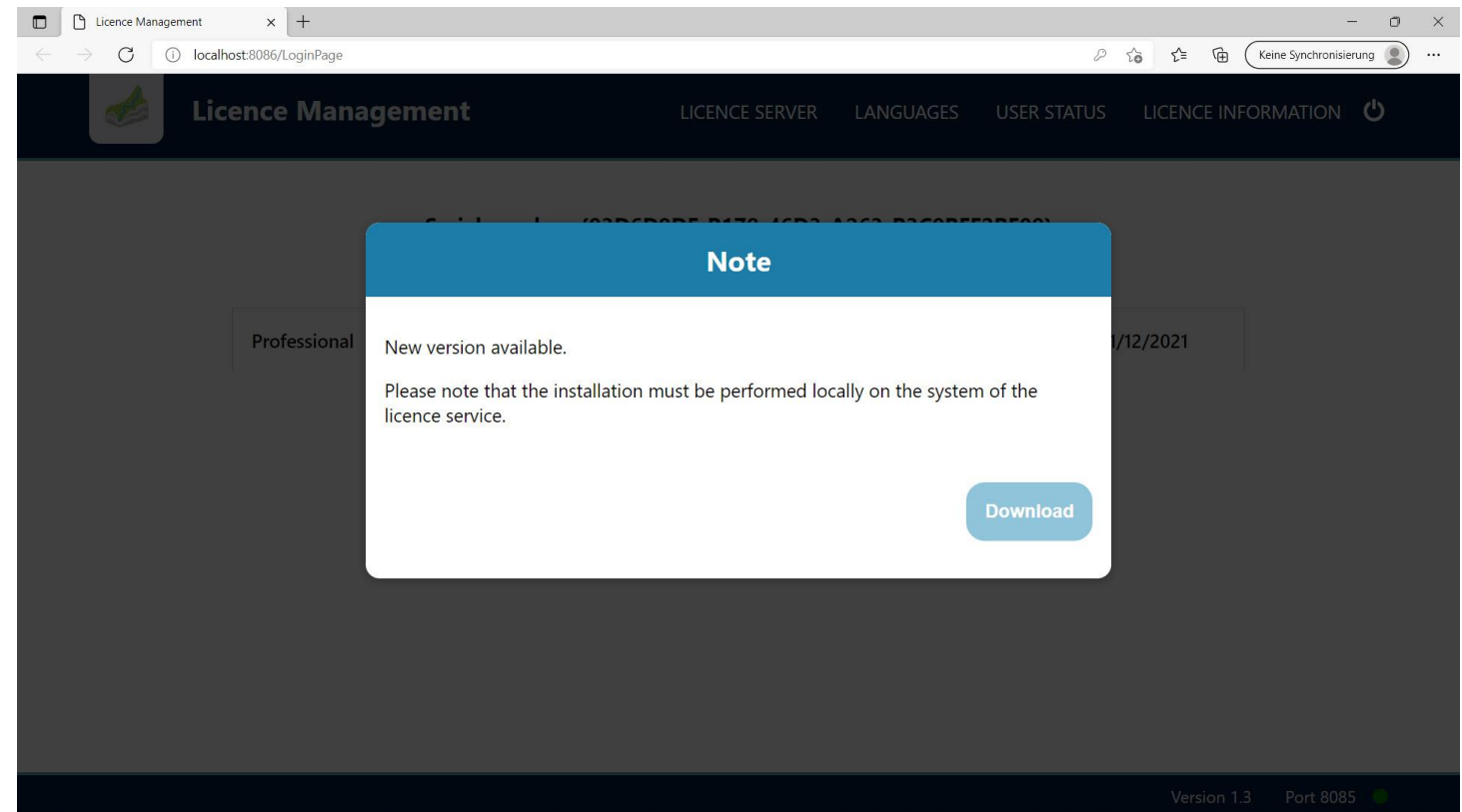
- LICENCE SERVER**
- ACTIONS**: 'Start', 'Stop', 'Update licence', and 'Download server update' (highlighted with a red box).
- INFORMATION**: A box showing 'Port: 8085', 'Version: 1.9', and 'Auto logout: 00h 45min'. A red arrow points to the 'Version: 1.9' field.

The bottom status bar shows 'Version 1.9' and 'Port 8085' with a green indicator light. A red arrow points from the 'Version: 1.9' field in the information box to the 'Version 1.9' text in the status bar.

Step 5: Update licence server

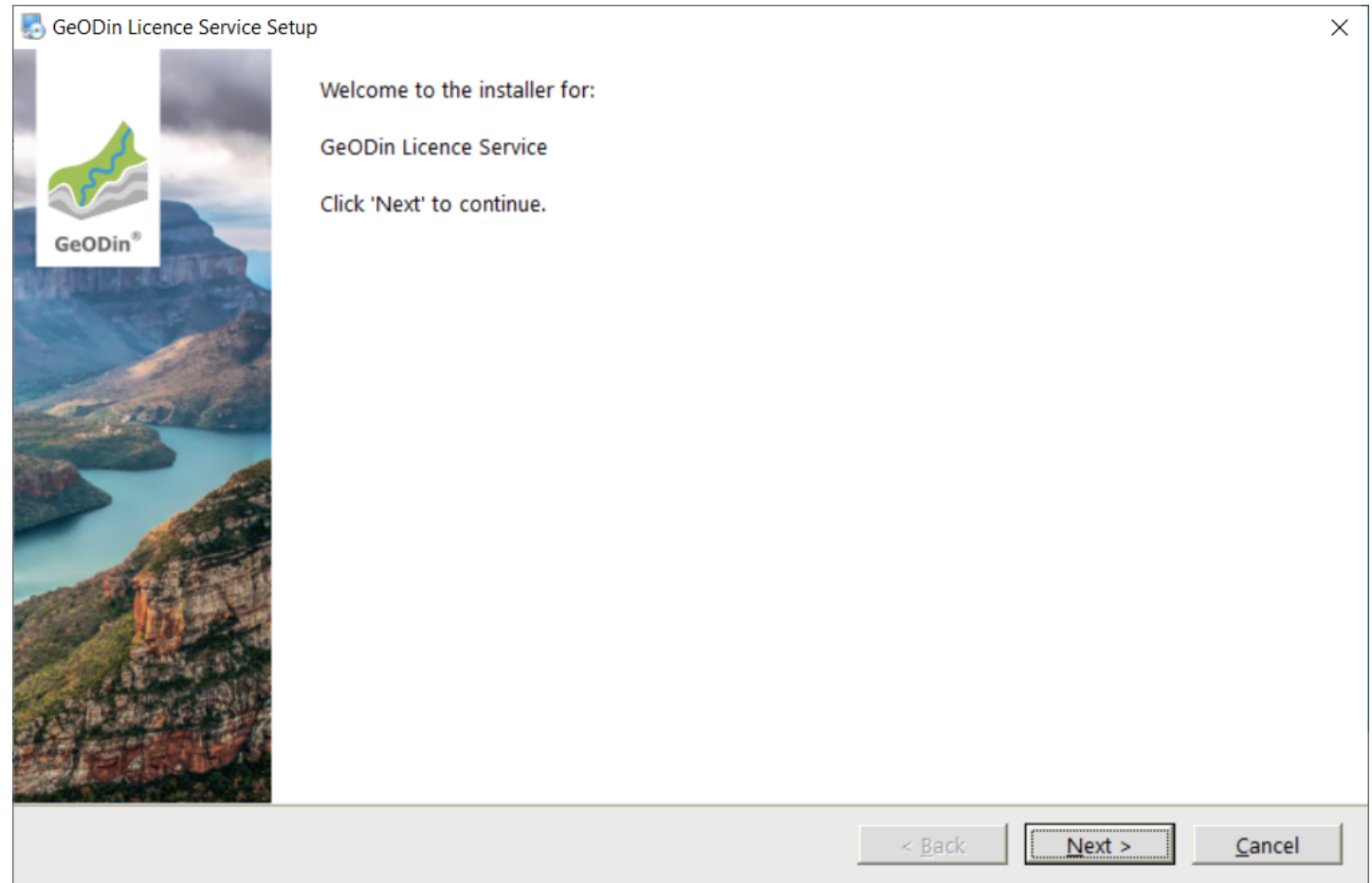
If a new version of the GeODin licence service is available, a corresponding note appears. To install the new version, start the download of the current **LicenceServerRegistration.exe** via the <Download> button.

Please note that the installation must be carried out locally on the system of the licence service.



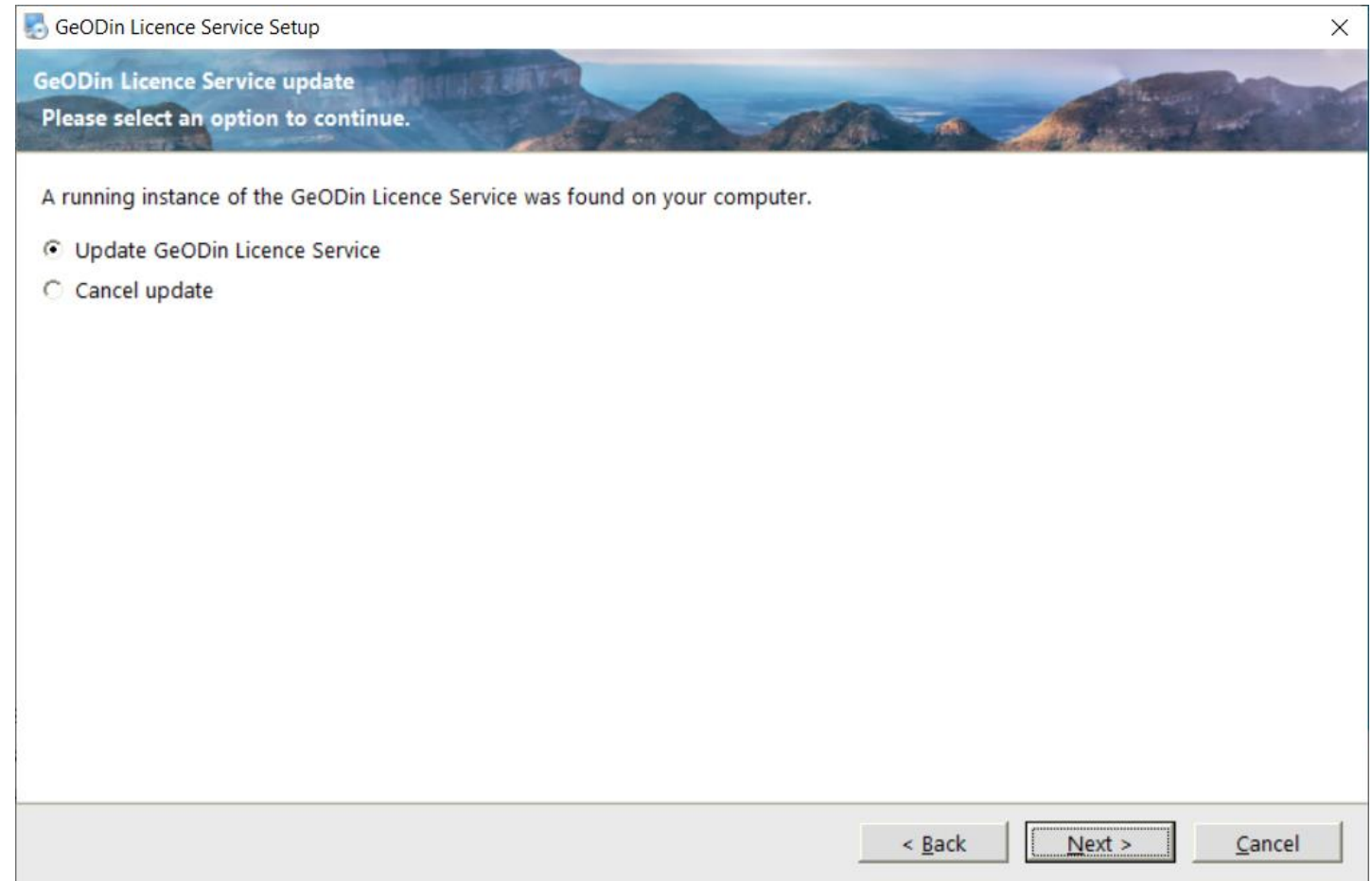
Step 6: Update licence server

Start the GeODin licence service update by double-clicking on the **LicenceServerRegistration.exe** you have just downloaded and proceed with the setup via the <Next> button.



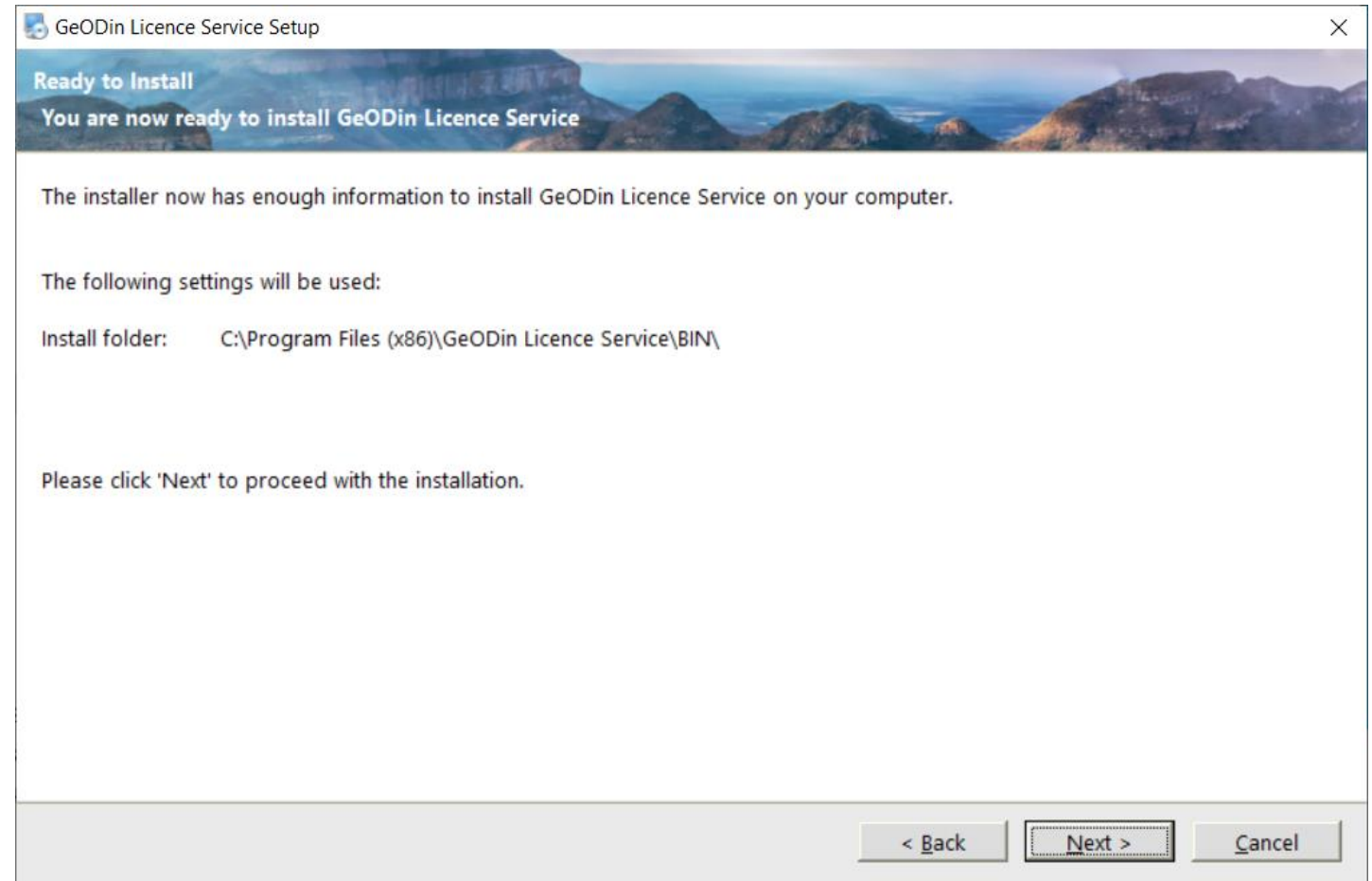
Step 7: Update licence server

Select the option - **Update GeODin Licence Service** - and confirm by clicking <Next>.



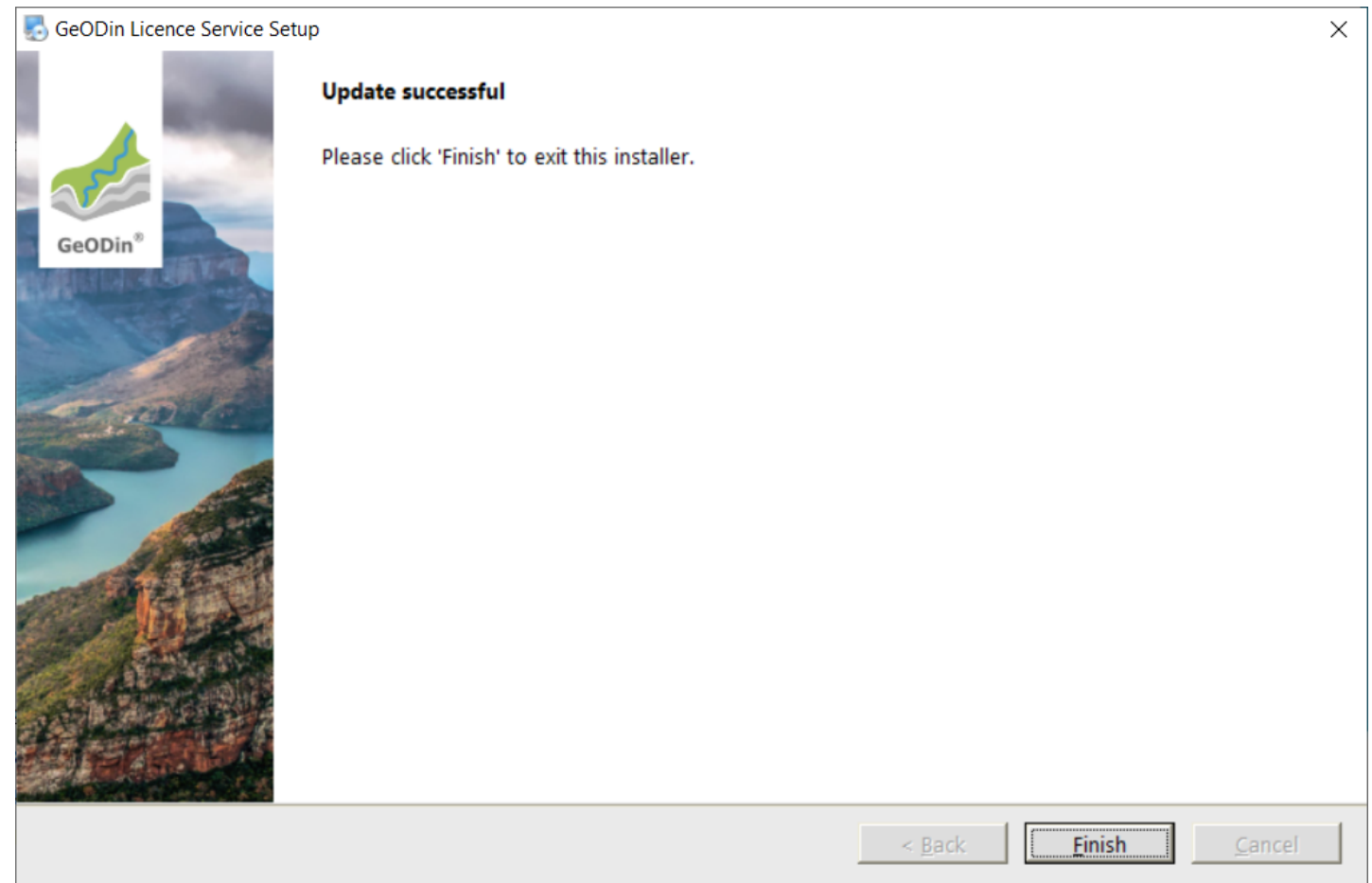
Step 8: Update licence server

Now the selected installation settings will be displayed again. After you have confirmed them via the <Next> button, the update of the GeODin licence service is carried out.




Step 9: Update successful

After successfully updating the GeODin licence service, you will receive a corresponding confirmation message. To exit the setup, confirm the message with <OK> and then press the <Finish> button.



Together we create a safe
and liveable world

 +49 (0)30 93651 317

 support@geodin.com

 www.geodin.com

FUGRO